



MINNESOTA
INTERAGENCY COUNCIL
ON HOMELESSNESS

Overview of Homelessness
Minnesota Senate Housing Finance and Policy Committee

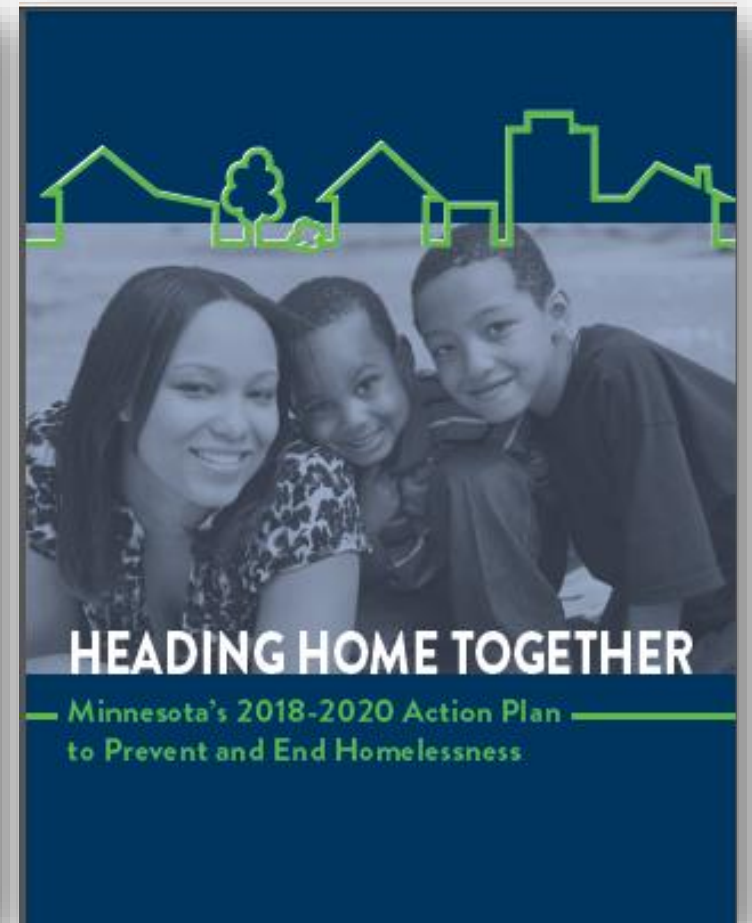
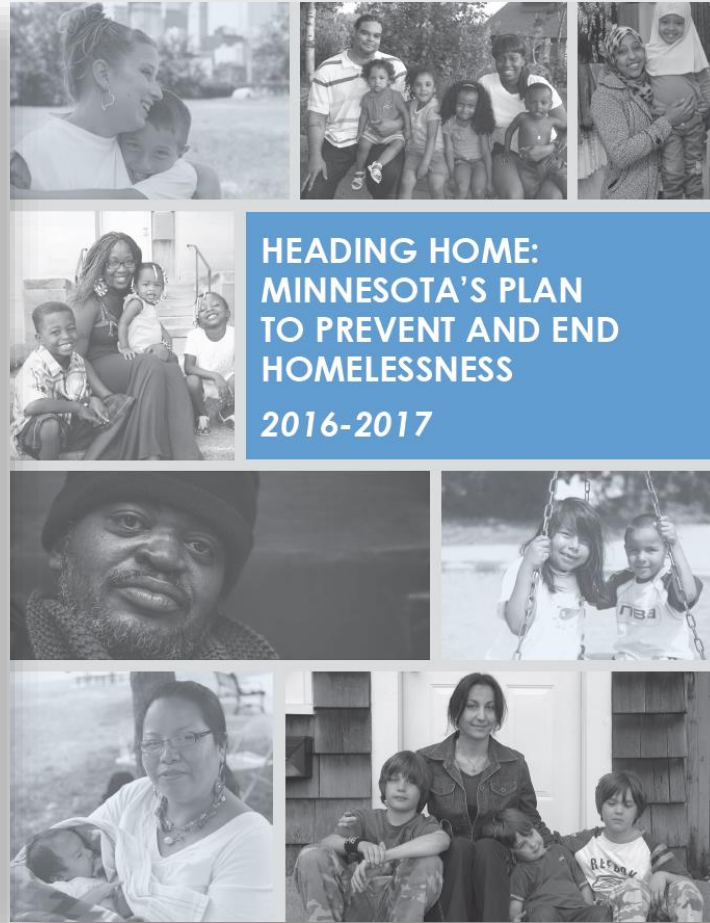
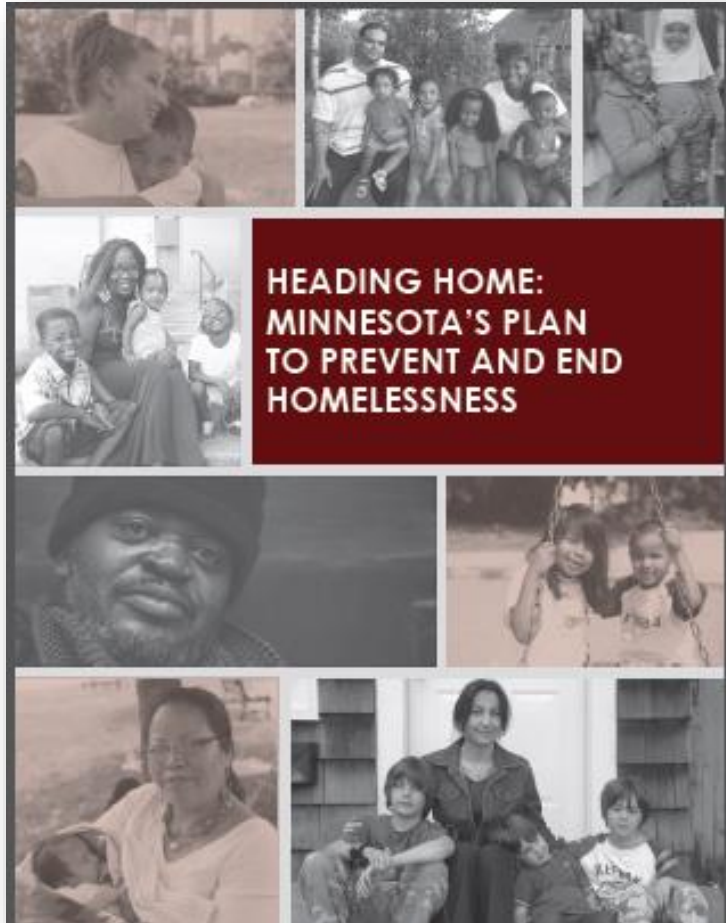
January 14, 2021

Minnesota Interagency Council on Homelessness

The Council is led by Lt. Governor Flanagan, Co-Chaired by Commissioners Harpstead and Ho, and includes the following agencies:

- Department of Corrections
- Department of Education
- Department of Employment and Economic Development
- Department of Health
- Department of Human Rights
- Department of Human Services
- Department of Public Safety
- Department of Revenue
- Department of Transportation
- Department of Veterans Affairs
- Metropolitan Council
- Minnesota Housing
- Minnesota Management and Budget
- Office of Higher Education

Heading Home, 2013 - 2020

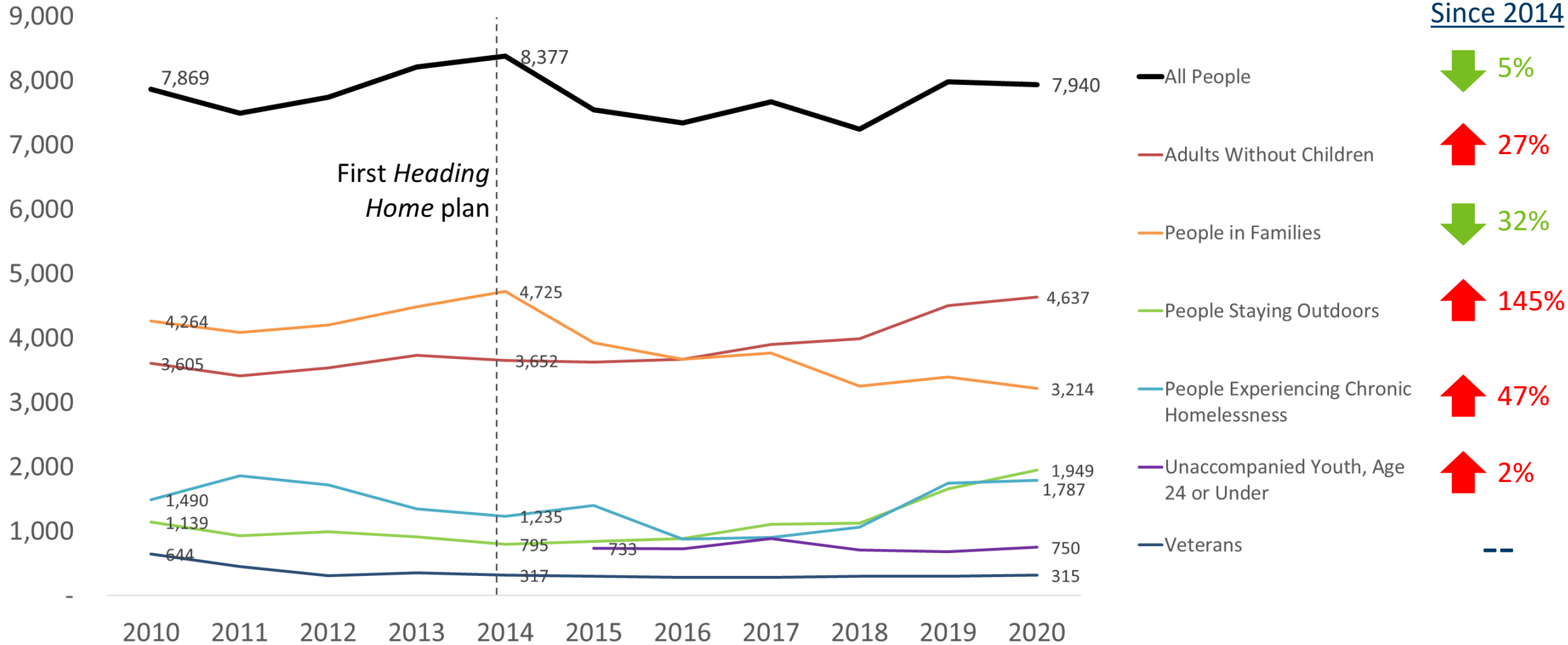


Seven Principles

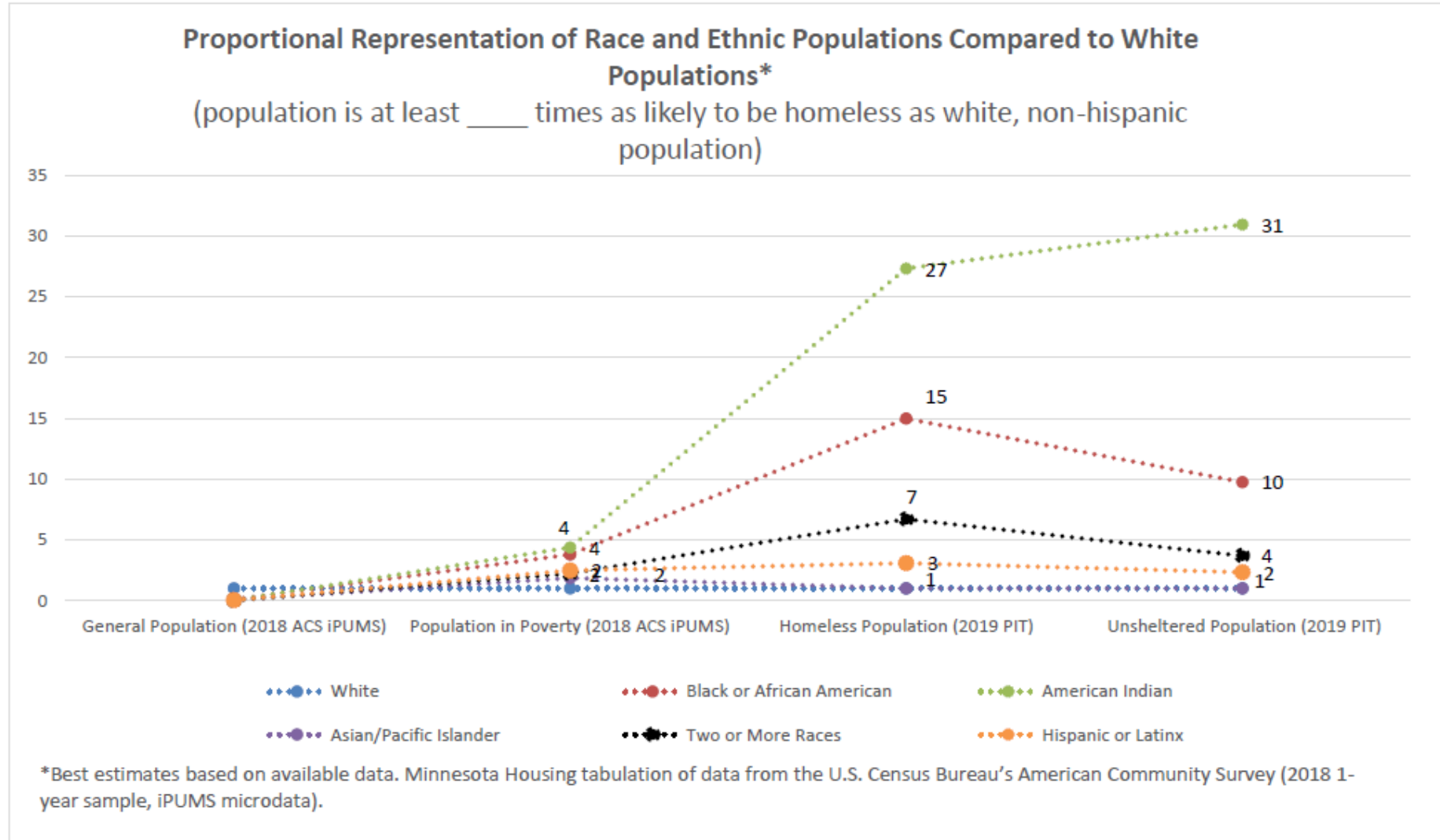
To prevent and end homelessness in Minnesota, we will work collaboratively to:

1. Identify all people experiencing homelessness.
2. Provide some form of shelter immediately to anyone who needs it, with appropriate services.
3. Link people experiencing homelessness with housing and services tailored to their needs through coordinated entry and prioritize people experiencing chronic homelessness for permanent supportive housing.
4. Assist people with moving swiftly into permanent housing with any needed supports.
5. Use a person-centered, Housing First orientation in our response to homelessness.
6. Help people experiencing or at risk of homelessness increase employment and income.
7. Organize resources, plans, partnerships, and system capacity that are sufficient to prevent and end homelessness on an ongoing basis.

Minnesota Point-in-Time count, 2010 – 2020

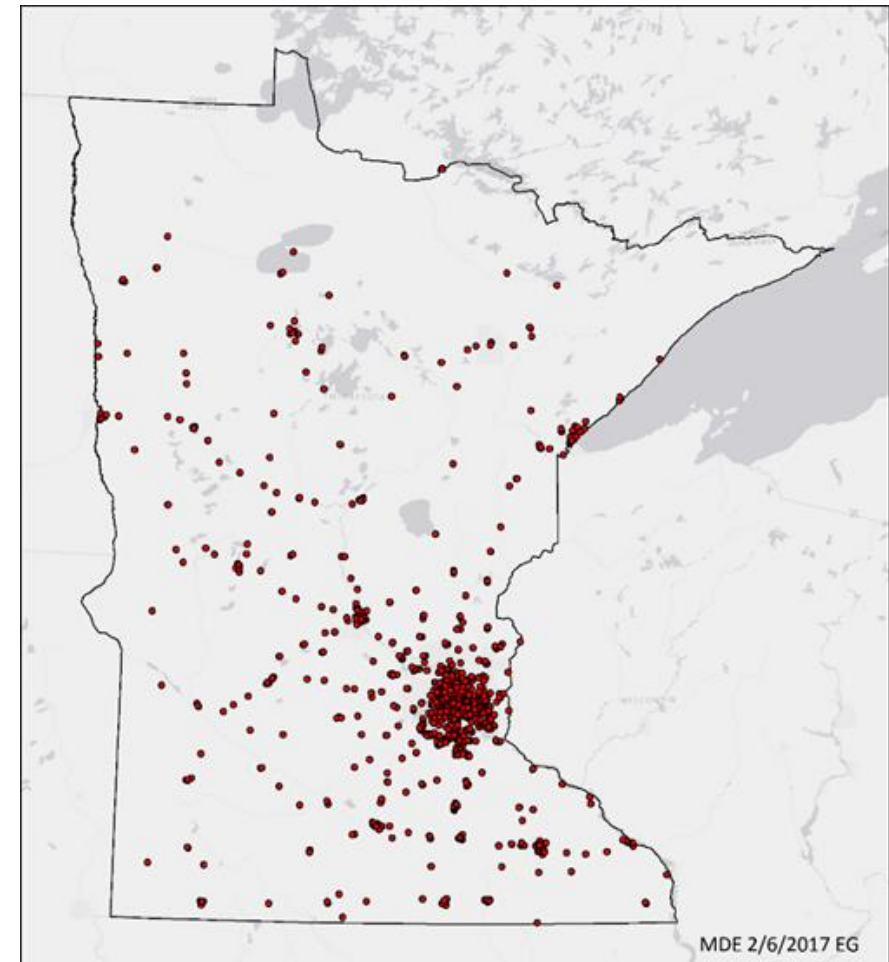


Homelessness reflects profound impacts of racism and inequity

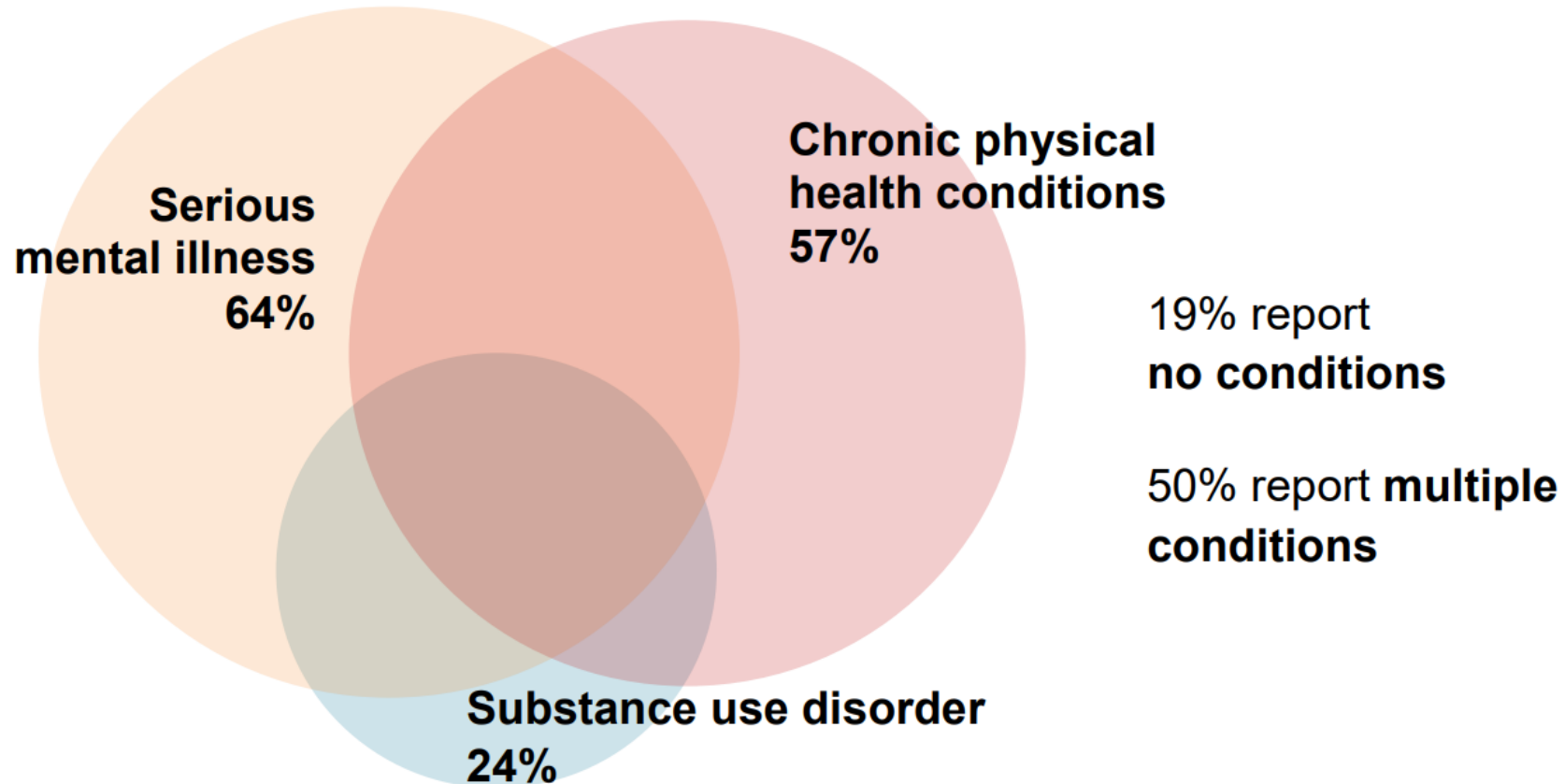


Student homelessness in Minnesota is widely distributed

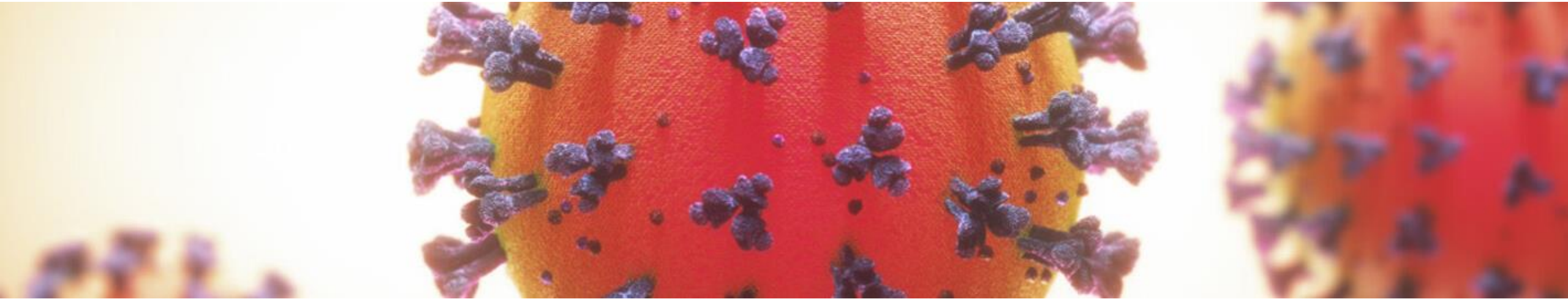
- 9,060 students experiencing homelessness were enrolled in Minnesota schools on October 1, 2019.
 - 1,172 schools and 309 school districts
 - 77 of Minnesota's 87 counties
- Student homelessness disproportionately impacts students of color, American Indian students, LGBTQ students, and students with disabilities.



Homeless adults face complicating health challenges



Source: Wilder Research, *Homelessness in Minnesota: Detailed Findings from the 2018 Minnesota Homeless Study*, March 2020



Statewide COVID response for people experiencing homelessness

Summary of key responses

- Rapid deployment of resources to local and tribal governments and nonprofit partners statewide that has helped **create over 2,800 temporary shelter options** (typically hotel/motel), cover staffing, and provide food and PPE.
- Ensure adequate isolation space for people without a safe place to recover on their own
- Guidance and technical assistance to homeless providers (shelters, outreach, public health)
- Extensive engagement of provider community including 1-on-1 technical assistance, newsletters, and weekly webinars
- Innovative use of Housing Support program to promote COVID-safe congregate settings and implement hotel-to-home model connecting people staying outdoors with permanent housing.

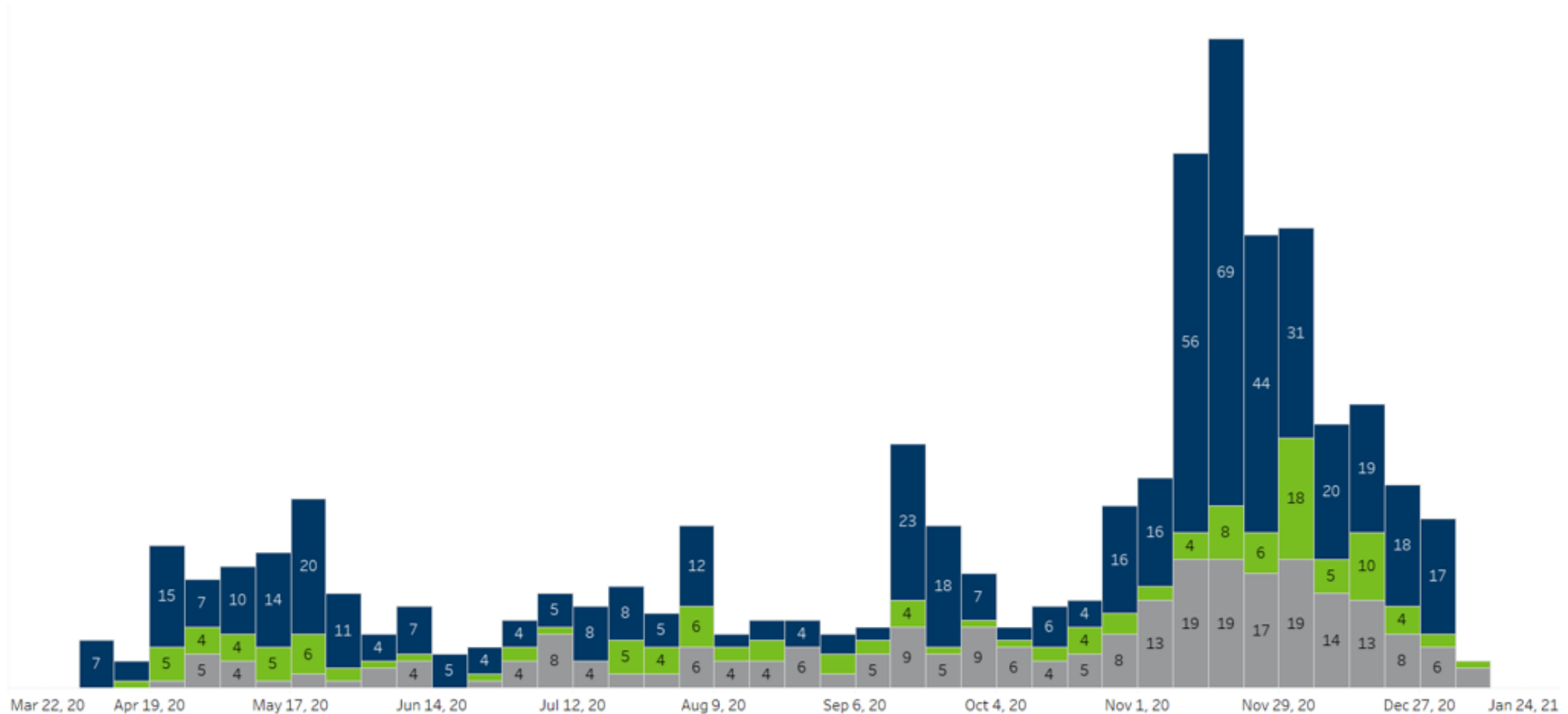
Summary of COVID-19 Cases

COVID-19 Summary of People Experiencing Homelessness and Staff in Minnesota*

as of Tuesday, January 5, 2021

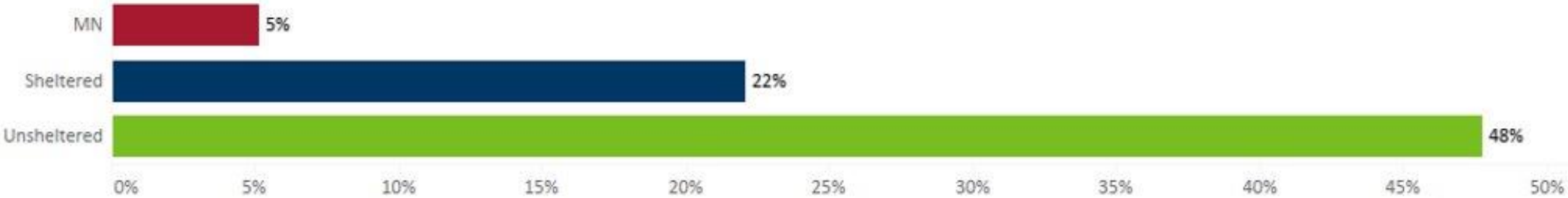
- Sheltered
- Unsheltered
- Staff

Since April 2020, 909 PEH and staff have tested positive for COVID-19.



Hospitalization Data

% EVER HOSPITALIZED



% EVER ICU



Thank you!