

# SENATE COMMITTEES - 2010

**Capital Investment**  
 Ch: Langseth  
 VC: Sieben

Peter Wattson C  
 Dave Jensen F

**Finance**  
 Ch: Cohen

Peter Wattson C  
 Matt Massman F

**Taxes**  
 Ch: Bakk  
 VC: Skoe

JoAnne Zoff C  
 Michelle Allen C  
 Susan Von Mosch F  
 Jack Paulson A

**Rules & Administration**  
 Ch: Pogemiller  
 VC: Clark

Peter Wattson C

**Property Tax Division**  
 Ch: Skoe

**E-12 Education Budget & Policy Division**  
 Ch: Stumpf  
 Dep. Ch: Wiger  
 VC-Budget: Bonoff  
 VC-Policy: Rummel

Eric Nauman F  
 Shelby McQuay A  
 Ann Marie Yunker C

**Higher Education Budget & Policy Division**  
 Ch: Pappas  
 VC:Sheran

Maja Weidmann F/A  
 John Fuller C

**Health & Human Services Budget Division**  
 Ch: Berglin  
 VC: Lynch

Dennis Albrecht F  
 Davie Giel A  
 Katie Cavanor C  
 Joan White C

**Environment, Energy & Natural Resources Budget Division**  
 Ch: Anderson  
 VC: Saxhaug

Dan Mueller F  
 Greg Knopff A  
 Carlon Doyle C

**Agriculture & Veterans Budget & Policy Division**  
 Ch: Vickerman  
 VC: Erickson Ropes

Dan Mueller F  
 Greg Knopff A  
 Tom Bottern C

**Economic Development & Housing Budget Division**  
 Ch: Tomassoni  
 VC:Sparks

Dave Jensen F  
 Darlene Sliwa A  
 Carlon Doyle C

**Transportation Budget & Policy Division**  
 Ch: Murphy  
 VC: Carlson

Krista Boyd F/A  
 Bonnie Berezovsky C

**Public Safety Budget Division**  
 Ch: Higgins  
 VC: Latz

Chris Turner F/A  
 Ken Backhus C

**Judiciary Budget Division**  
 Ch: Foley

Chris Turner F/A  
 Ken Backhus C

**State Government Budget Division**  
 Ch: Betzold  
 VC: Olseen

Kevin Lundeen F  
 Tom Bottern C

**Energy Subdivision**  
 Ch: Kubly

**Transit Subdivision**  
 Ch: Dibble

**Education**  
 Ch. Stumpf  
 Dep. Ch: Wiger  
 VC-Budget: Bonoff  
 VC-Policy: Rummel

Ann Marie Yunker C  
 Shelby McQuay A  
 Eric Nauman F

**Higher Education**  
 Ch: Pappas  
 VC:Sheran

John Fuller C  
 Maja Weidmann F/A

**Health, Housing & Family Security**  
 Ch: Marty  
 VC: Torres Ray

Katie Cavanor C  
 Joan White C  
 Davie Giel A  
 Dennis Albrecht F

**Environment & Natural Resources**  
 Ch: Chaudhary  
 VC: Skogen

Carlon Doyle C  
 Greg Knopff A  
 Dan Mueller F

**Energy, Utilities, Technology & Communications**  
 Ch: Prettner Solon  
 VC: Doll

John Fuller C  
 Darlene Sliwa A  
 Dave Jensen F

**Agriculture & Veterans**  
 Ch: Vickerman  
 VC: Erickson Ropes

Tom Bottern C  
 Greg Knopff A  
 Dan Mueller F

**Business, Industry & Jobs**  
 Ch: Metzen  
 VC: Saltzman

John Fuller C  
 Darlene Sliwa A  
 Dave Jensen F

**Commerce & Consumer Protection**  
 Ch: Scheid  
 VC: Sparks

Chris Stang C  
 Darlene Sliwa A  
 Dave Jensen F

**Transportation**  
 Ch: Murphy  
 VC: Carlson

Bonnie Berezovsky C  
 Krista Boyd F/A

**Judiciary**  
 Ch: Moua  
 VC: Olson, M.

Kathy Pontius C  
 Ken Backhus C  
 Chris Turner F/A

**State & Local Government Operations & Oversight**  
 Ch: Rest  
 VC: Lourey

Tom Bottern C  
 Dan McGowan C  
 Kevin Lundeen F

# SENATE COMMITTEES - 2010

**Capital Investment**  
  
Ch: Langseth  
VC: Sieben

Kathy Blair A  
Jennifer Burks L

**Finance**  
  
Ch: Cohen

Kim Babine A  
Nicole Kaplan L

**Taxes**  
  
Ch: Bakk  
VC: Skoe

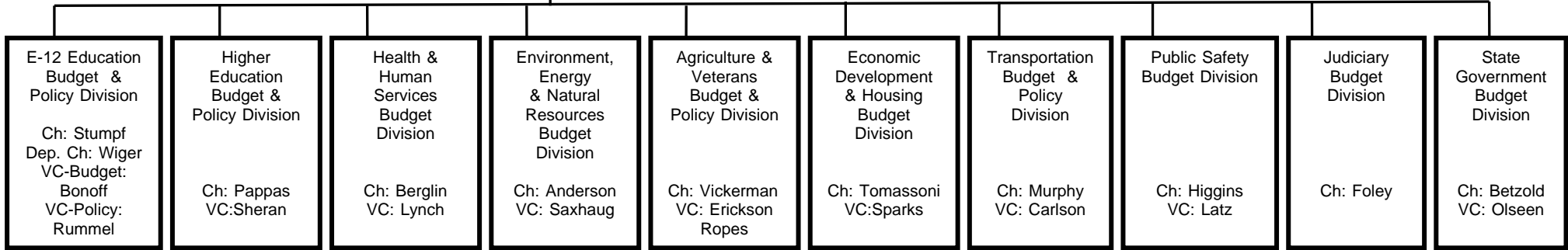
Chris Runquist A  
Julie Bayerl L

**Rules & Administration**  
  
Ch: Pogemiller  
VC: Clark

Michele Kelm-Helgen A  
Kristen Bluhm L

**Property Tax Division**  
Ch: Skoe

Jason Tidemann L



**E-12 Education Budget & Policy Division**  
  
Ch: Stumpf  
Dep. Ch: Wiger  
VC-Budget: Bonoff  
VC-Policy: Rummel

Daron Korte A  
Jeri Wenzel L

**Higher Education Budget & Policy Division**  
  
Ch: Pappas  
VC:Sheran

Catherine Ryan A  
Kara Josephson L

**Health & Human Services Budget Division**  
  
Ch: Berglin  
VC: Lynch

Shannon Cunningham A  
Shelley Polansky L

**Environment, Energy & Natural Resources Budget Division**  
  
Ch: Anderson  
VC: Saxhaug

Don Jorovsky A  
Alison Piumbroeck L

**Agriculture & Veterans Budget & Policy Division**  
  
Ch: Vickerman  
VC: Erickson Ropes

Tim Michaels A  
Sandi Brown L

**Economic Development & Housing Budget Division**  
  
Ch: Tomassoni  
VC:Sparks

Cap O'Rourke A  
Laura Bakk L

**Transportation Budget & Policy Division**  
  
Ch: Murphy  
VC: Carlson

Billie Ball A  
Jenny Morris L

**Public Safety Budget Division**  
  
Ch: Higgins  
VC: Latz

Alice Seuffert A  
Nicque Schaff L

**Judiciary Budget Division**  
  
Ch: Foley

Erik Reseland A  
Kelly Holmes-Jagdfeld L

**State Government Budget Division**  
  
Ch: Betzold  
VC: Olseen

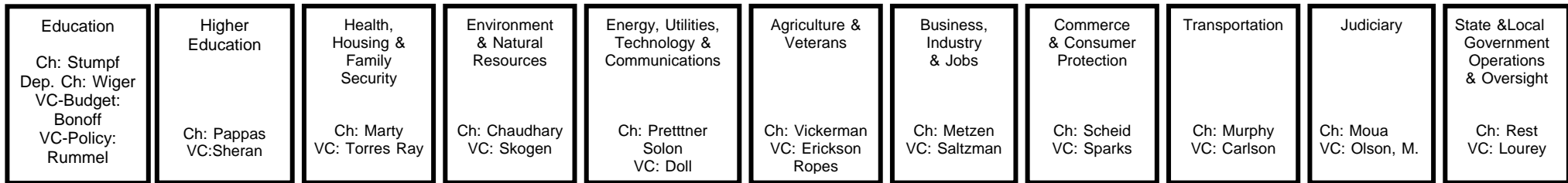
Kathleen Lonergan A  
Amos Briggs L

**Energy Subdivision**  
Ch: Kubly

Ali Holzman L

**Transit Subdivision**  
Ch: Dibble

Michael Shmagin L



**Education**  
  
Ch: Stumpf  
Dep. Ch: Wiger  
VC-Budget: Bonoff  
VC-Policy: Rummel

Daron Korte A  
Jeri Wenzel L

**Higher Education**  
  
Ch: Pappas  
VC:Sheran

Catherine Ryan A  
Kara Josephson L

**Health, Housing & Family Security**  
  
Ch: Marty  
VC: Torres Ray

Barbara Jacobs A  
Kriystauhi Fitchett L

**Environment & Natural Resources**  
  
Ch: Chaudhary  
VC: Skogen

Mary Ann Hecht A  
Donovan Hurd L

**Energy, Utilities, Technology & Communications**  
  
Ch: Prettner Solon  
VC: Doll

William Seuffert A  
Marnie Bureau Kesler

**Agriculture & Veterans**  
  
Ch: Vickerman  
VC: Erickson Ropes

Tim Michaels A  
Sandi Brown L

**Business, Industry & Jobs**  
  
Ch: Metzen  
VC: Saltzman

Faye Sparks A  
Brian Martinson A  
Lisa Sarne L

**Commerce & Consumer Protection**  
  
Ch: Scheid  
VC: Sparks

Tangee Harrison A  
Jamie Olson L

**Transportation**  
  
Ch: Murphy  
VC: Carlson

Billie Ball A  
Jenny Morris L

**Judiciary**  
  
Ch: Moua  
VC: Olson, M.

Eric Dick A  
James Chang L

**State & Local Government Operations & Oversight**  
  
Ch: Rest  
VC: Lourey

Brenda Shafer-Pellinen A  
Peter Brickwedde L